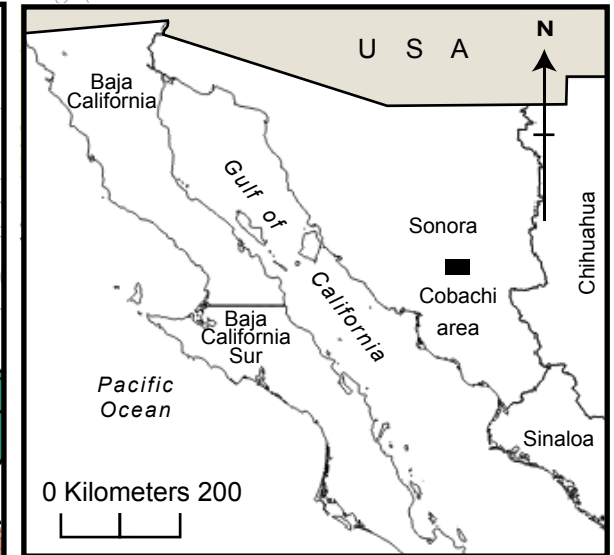
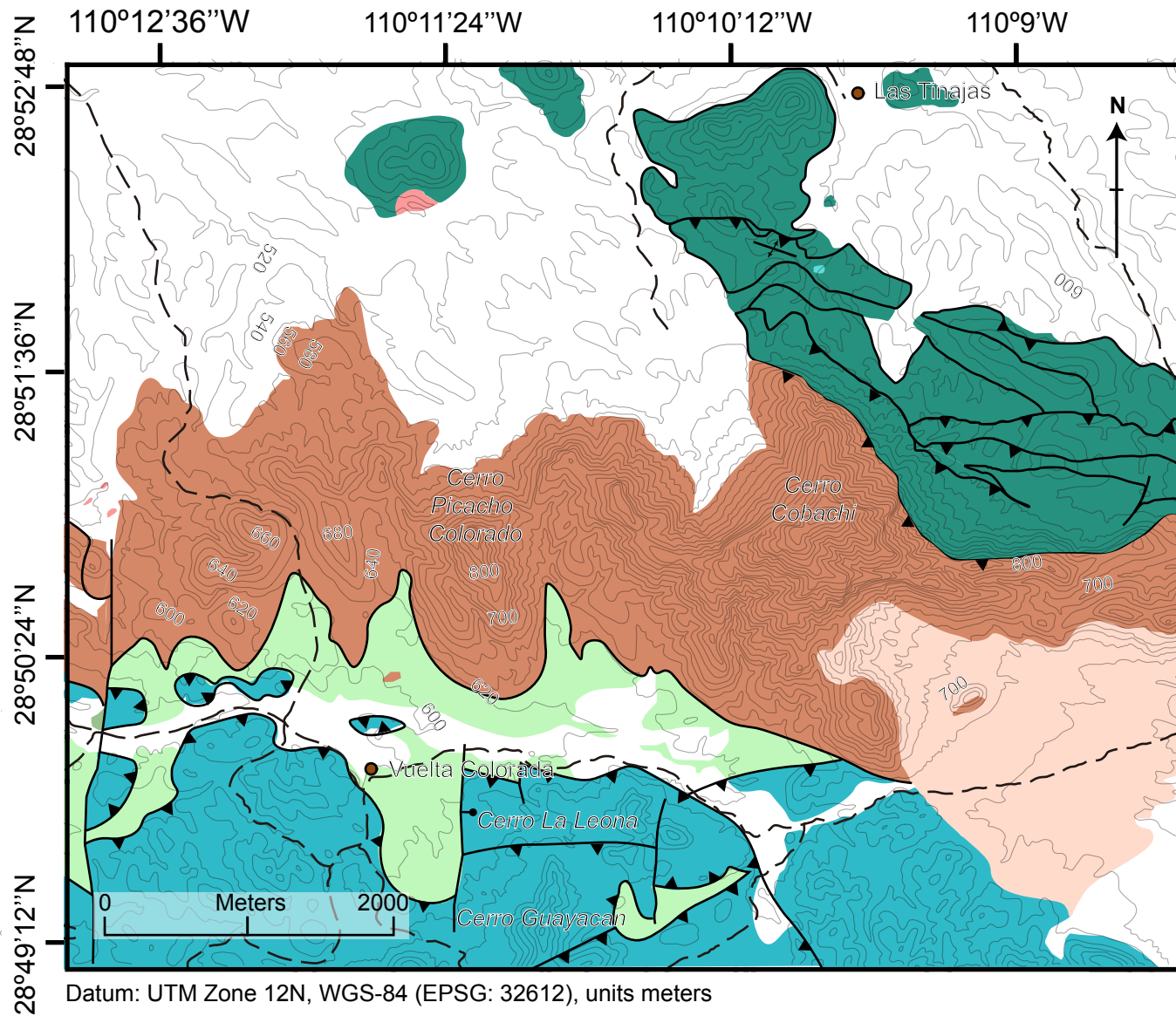


Geologic map of the Cobachi area (Sonora). Based on Ketner and Noll (1987)



Legend

- Non-differentiated rocks (Quaternary-Paleogene)
- Non-differentiated igneous rocks (Paleogene-Cretaceous)
- Picacho Colorado Formation (Mississippian-Permian)
- Vuelta Colorado Formation (Pennsylvanian-Permian)
- Guayacan Group (Ordovician to Mississippian)
- Tinajas Group (Cambrian to Devonian)
- Dirt Road
- Fault
- Locality
- Normal fault
- Synclinal fold
- Thrust fault